

# New Jersey Department of Transportation Organization Chart



State of New Jersey

**Mission Statement:** "Improving Lives by Improving Transportation."

View our latest organization chart online at:  
[www.njdot.nj.gov/about/](http://www.njdot.nj.gov/about/)



## Commissioner

Francis K. O'Connor

## Chair of the Board NJ Transit

Francis K. O'Connor

**The Commissioner serves in an ex-officio capacity for the following agencies:**

New Jersey Transit Corporation (Chair)  
New Jersey Transportation Trust Fund Authority (Chair)  
Delaware Valley Regional Planning Commission  
New Jersey Motor Vehicle Commission  
New Jersey Redevelopment Authority  
New Jersey Turnpike Authority  
North Jersey Transportation Planning Authority  
South Jersey Transportation Authority  
South Jersey Transportation Planning Organization  
State Planning Commission

**The Commissioner is also**

Chair of the Board, New Jersey Transit Corporation  
Chair of the Board, New Jersey Transportation Trust Fund Authority  
Chair of the Board, New Jersey Turnpike Authority  
Chair of the Board, South Jersey Transportation Authority

**Inspector General**  
TBD

**Legal Services**  
Philip Espinosa

## Deputy Commissioner

Joseph D. Bertoni

**Director  
Civil Rights &  
Affirmative Action**  
Vicki Tilghman-Ansley

**External Programs**  
TBD

**Internal Programs**  
R. Outram

## Assistant Commissioner

(Emergency Management Coordinator)

Christopher Feintheil

**Deputy Director  
Program Advancement**  
V. Holman

## Assistant Commissioner

Administration

Kelly A. Hutchinson

**Division Director  
Support Services**  
J. Debby Hatzisavvas

**Deputy Director  
Support Services**  
A. Zeleznock

**Facilities  
Planning &  
Engineering &  
Construction**  
D. Meszaros

**Employee Safety**  
R. Zydorski

**Bldg. Mgmt. Services**  
S. Mooney

**Deputy Director  
Human Resources**  
J. Nelson

**Employee Relations**  
R. Thomas

**Employee Benefits  
and Services**  
D. Morales

**Deputy Director  
Human Resources**  
K. Janiszewski

**Recruitment and  
Appointments**  
R. Savelli

## Chief of Staff

Christopher Scales

**Director  
Community &  
Constituent Relations**  
Jesus Alcazar

**Deputy Director  
Community &  
Constituent Relations**  
M. Hammond

**Director  
Communications**  
James Barry

**Press Manager**  
S. Schapiro

**Social Media Manager**  
D. Calcagni

**Director  
Legislative,  
Regulatory Actions**  
Natalie Mintchwarner

**Deputy Director  
Legislative Analysis**  
M. Muhammad

## Chief Financial Officer

Finance

Charles Maciejunes

**Director  
Budget**  
Steven Morley

**Budget Analysis**  
R. Calderon

**Enterprise  
Management Office**  
TBD

**Director  
Accounting and  
External Audit**  
Barbara DeLucia

**Deputy Director**  
C. Breza

**Accounting  
Operations**  
T. Goodson

**Agreement  
Accounting**  
D. Naik

**External Audit**  
R. Temmer

**Director  
Procurement**  
Anthony Genovese

**Deputy Director**  
K. Abbott

**Professional and  
Construction  
Services**  
M. Serenelli

**Equipment, Materials  
& Supplies**  
M. Groninger

**Director  
Information  
Technology**  
Gary Zayas

**IT Security and  
Services**  
S. Prichard

**Applications  
Development &  
Systems Support**  
J. Licari

**Information  
Management &  
Technology Plng.**  
T. Stewart

**Senior Director  
Transportation  
Mobility**  
Sal Cowan

**Director  
Mobility Engineering**  
John Longworth

**Mobility Operations  
North**  
M. Juliano

**Mobility Operations  
South**  
TBD

**Permits**  
A. Gupta

**Office of Emergency  
Management, Security  
& Response**  
R. Burd

**Senior Director  
Regions**  
Anthony Ennas

**Division Director  
Operations  
North**  
Danielle Roman

**Asst. Division Director  
North**  
O. Diaz

**Division Director  
Operations  
Central**  
Christopher Tomlin

**Asst. Division Director  
Central**  
A. Marino

**Division Director  
Operations  
South**  
John Bystrycki

**Asst. Division Director  
South**  
J. Evanylo

**Director  
Operations Support  
and Engineering**  
Jackie Yiu

**Asst. Division Director  
Operations Support  
and Engineering**  
F. Schneider

**Equipment  
Engineering &  
Operations**  
M. Boyer

## Assistant Commissioner

Capital Program Management

Parth Oza

Deputy State Transportation Engineer

**Director  
Maritime**  
G. Clifton

**Senior Director  
Construction and  
Materials**  
Albert Balluch

**Director  
Construction and  
Materials**  
Alexander Borovskis

**Materials**  
E. Inman

**Construction  
Management**  
Y. Bhavsar

**Reg. Constr.  
Engineering North**  
N. Appesh

**Reg. Constr.  
Engineering Central**  
C. Kneidinger

**Reg. Constr.  
Engineering South**  
D. DiValerio

**Director  
Construction &  
Materials/Alternative  
Project Delivery**  
T. Kondash

**Design Build**  
TBD

## Assistant Commissioner

Local Resources & Community

Development

Laine Rankin

**Outdoor  
Advertising and  
Junkyards**

**Aeronautics &  
Modal Grants**  
K. Davis

**Senior Director  
Local Aid & Economic  
Development**  
David Bruccoleri

**Director  
Local Aid & Economic  
Development**  
Deval Desai

**Local Aid Economic  
Development &  
Local Support-  
Division Office**  
K. Skala

**Local Aid District 1**  
A. Iervolino

**Local Aid District 2  
Newark**  
E. Johnson

**Local Aid District 3**  
K. Pandit

**Local Aid District 4  
Cherry Hill**  
T. Berryman

**Director  
Community  
Development**  
Veronica Murphy

**Project  
Development**  
C. Jegan

**Major Access  
Permits**  
TBD

**Director  
Environmental  
Resources**  
Pamela Garrett

**Environmental  
Policy Group**  
W. McBride

**Operations Project  
Support Unit**

**Stromwater  
Compliance & Site  
Remediation  
Group**

**Project  
Development  
Support Unit**

**Director  
Statewide Planning  
(Director, NJ Research  
Center)**  
TBD

**Statewide  
Strategies**  
S. Joshi

**Deputy Director**  
A. Gendek

**Research**  
TBD

## Assistant Commissioner

Statewide Planning, Safety and Capital

Investment

Eric Powers

**Director  
Capital Investment and  
Program Coordination**  
Sue Tomlinson

**Deputy Director  
Capital Investment and  
Program Coordination**  
A. Polachak

**Capital Program  
Coordination**  
J. Figon

**Capital Program  
Development**  
TBD

**Director  
Safety**  
Frank Neary

**Deputy Director  
Safety, Bicycle and  
Pedestrian Programs**  
D. LiSanti

**Transportation Data and  
Support**  
S. Choborda

**Safety, Bicycle and  
Pedestrian Programs**  
TBD

**Senior Director  
Highway & Traffic  
Design**  
(Deputy State Transp. Engr.)

Robert Marshall

**Director  
Traffic Engineering**  
J. Oplinger

**Director  
Design Services**  
A. Didok

**Pavement & Drainage  
Management and  
Technology**  
R. Blight

**Director  
Right of Way &  
Access Management**  
Victor Akpu

Robert Marshall

**Deputy Director  
Right of Way &  
Access Management**  
R. Scanlon

**Northern District**  
TBD

**South District**  
M. Palmer

**Right of Way &  
Access Management**  
E. Handleman

**Technical Support**  
D. Kook

**Closing**  
D. Hutchinson

**Director  
Capital Program  
Support**  
Tina Shutz

Robert Marshall

**Design Standards**  
A. Roda

**Landscape  
Architecture & Env.  
Solutions**  
TBD

**Director  
Project Management**  
Atul Shah

Robert Marshall

**Deputy Director  
Team B**  
P. Patel

**Program  
Management Office**  
S. Ackerman

**Executive Regional  
Manager  
Team A**  
G. Patel

**Executive Regional  
Manager  
Team C**  
H. Dave

**Executive Regional  
Manager  
Team D**  
C. Manz

**Director  
Bridge Engineering &  
Infrastructure Mgt.**  
(State Transp. Engr.)

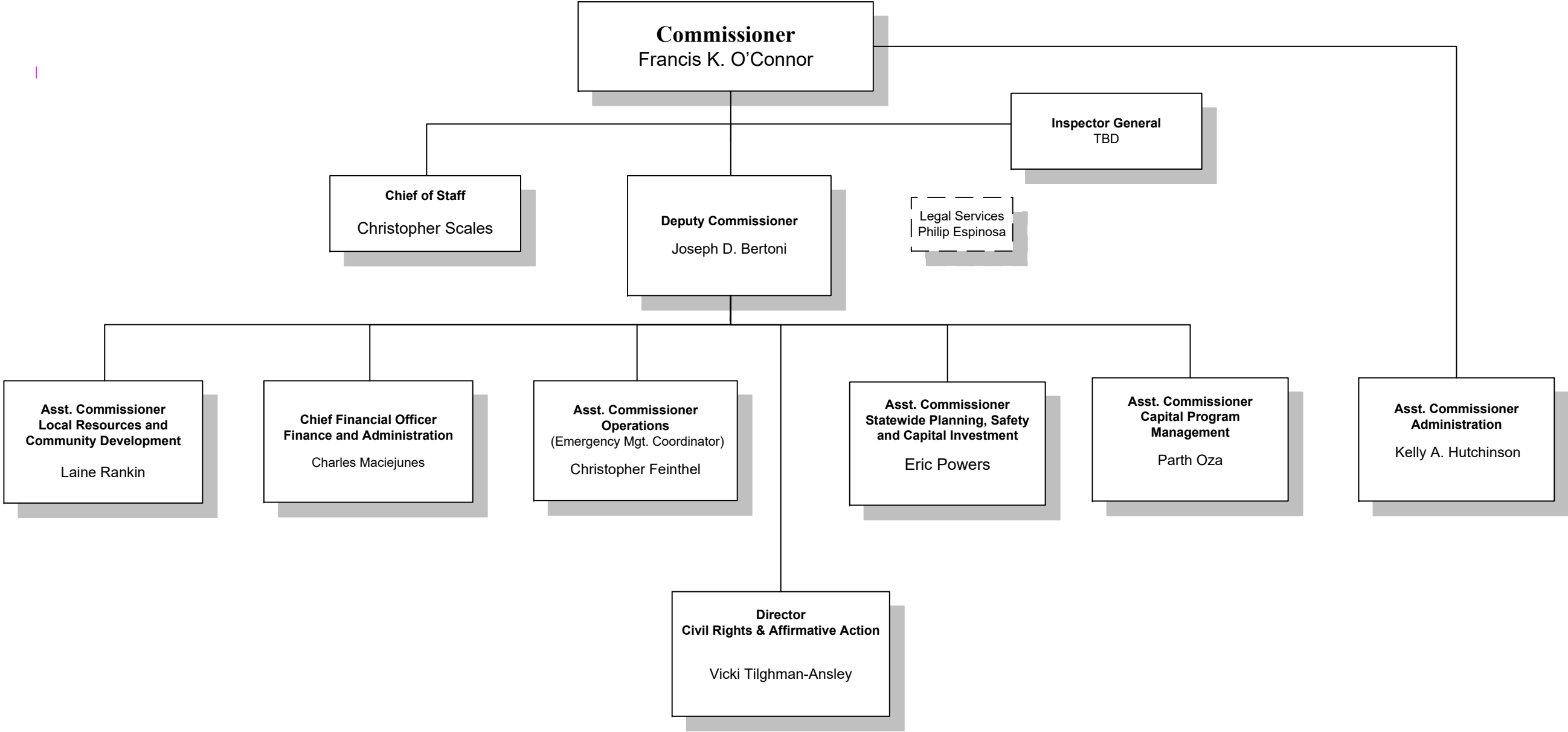
Eric Yermack

**Structural Design &  
Geotechnical  
Engineering**  
K. Sharp

**Structural Evaluation &  
Bridge Management**  
M. Khan

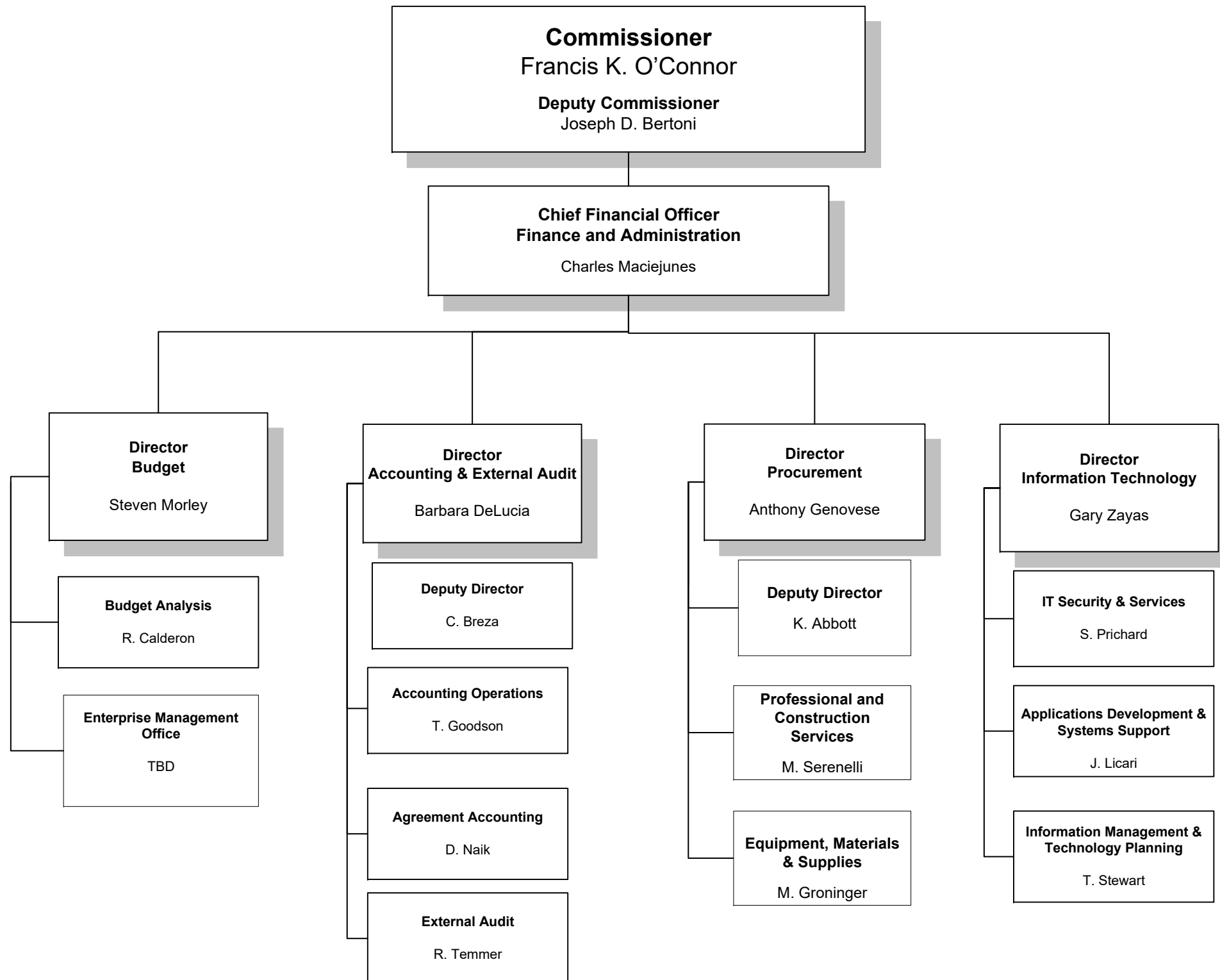
**Structural & Railroad  
Engr. Services**  
A. Najem

New Jersey Department of Transportation  
Organization Chart  
*Deputy Commissioner*



# New Jersey Department of Transportation Organization Chart

## Finance and Administration



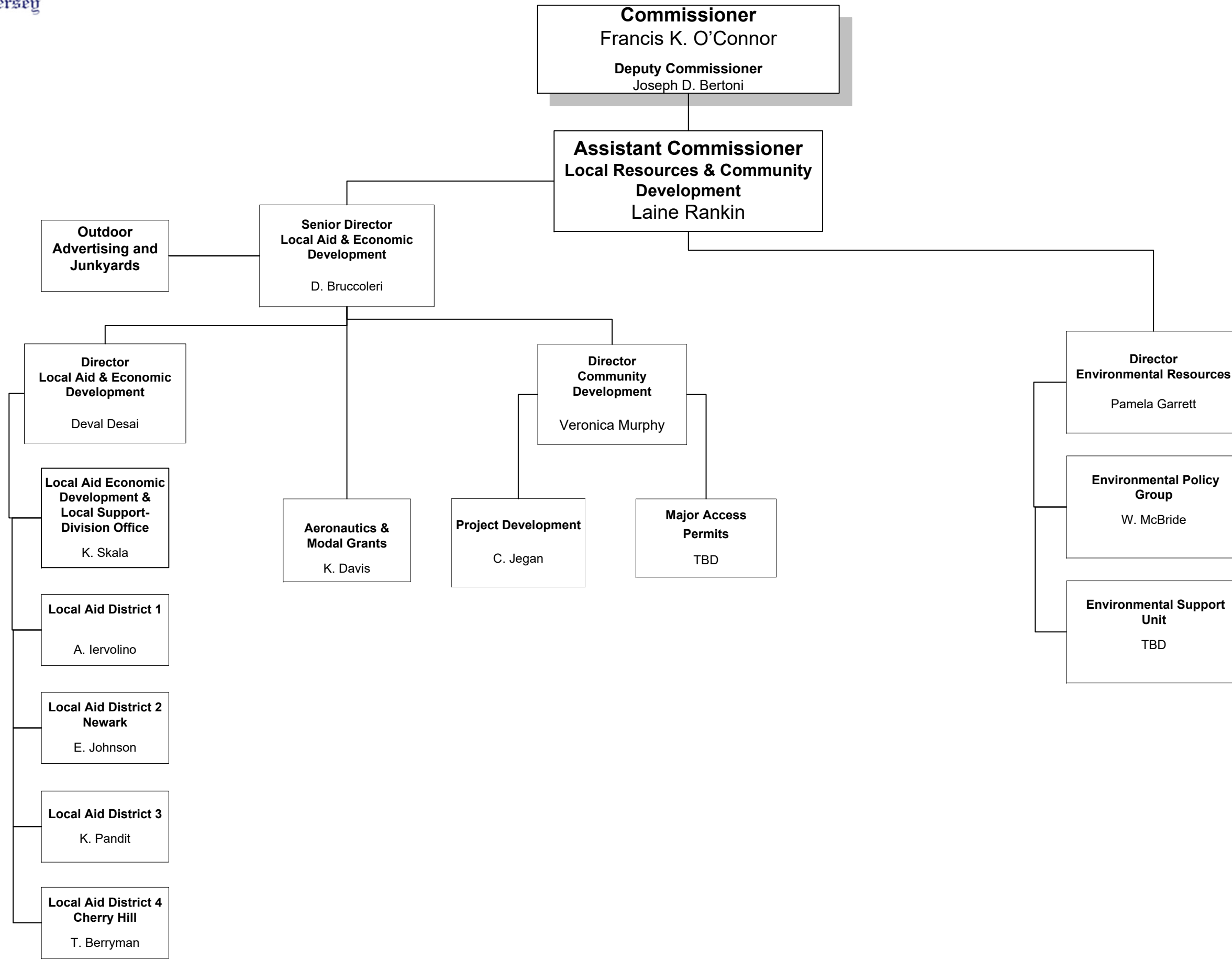


State of New Jersey

New Jersey Department of Transportation  
Organization Chart



Local Resources & Community Development

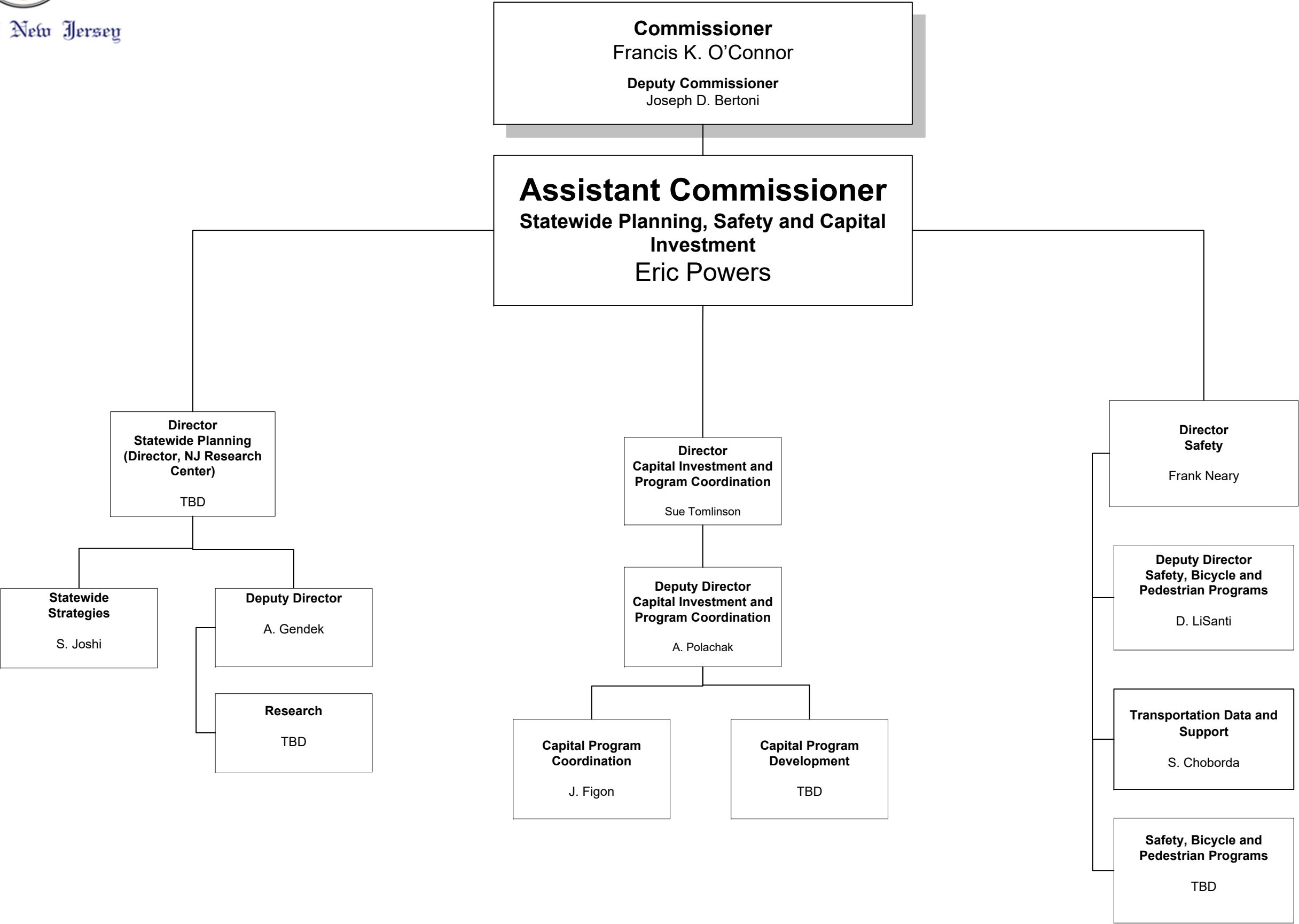


New Jersey Department of Transportation  
Organization Chart



State of New Jersey

*Statewide Planning, Safety and Capital Investment*



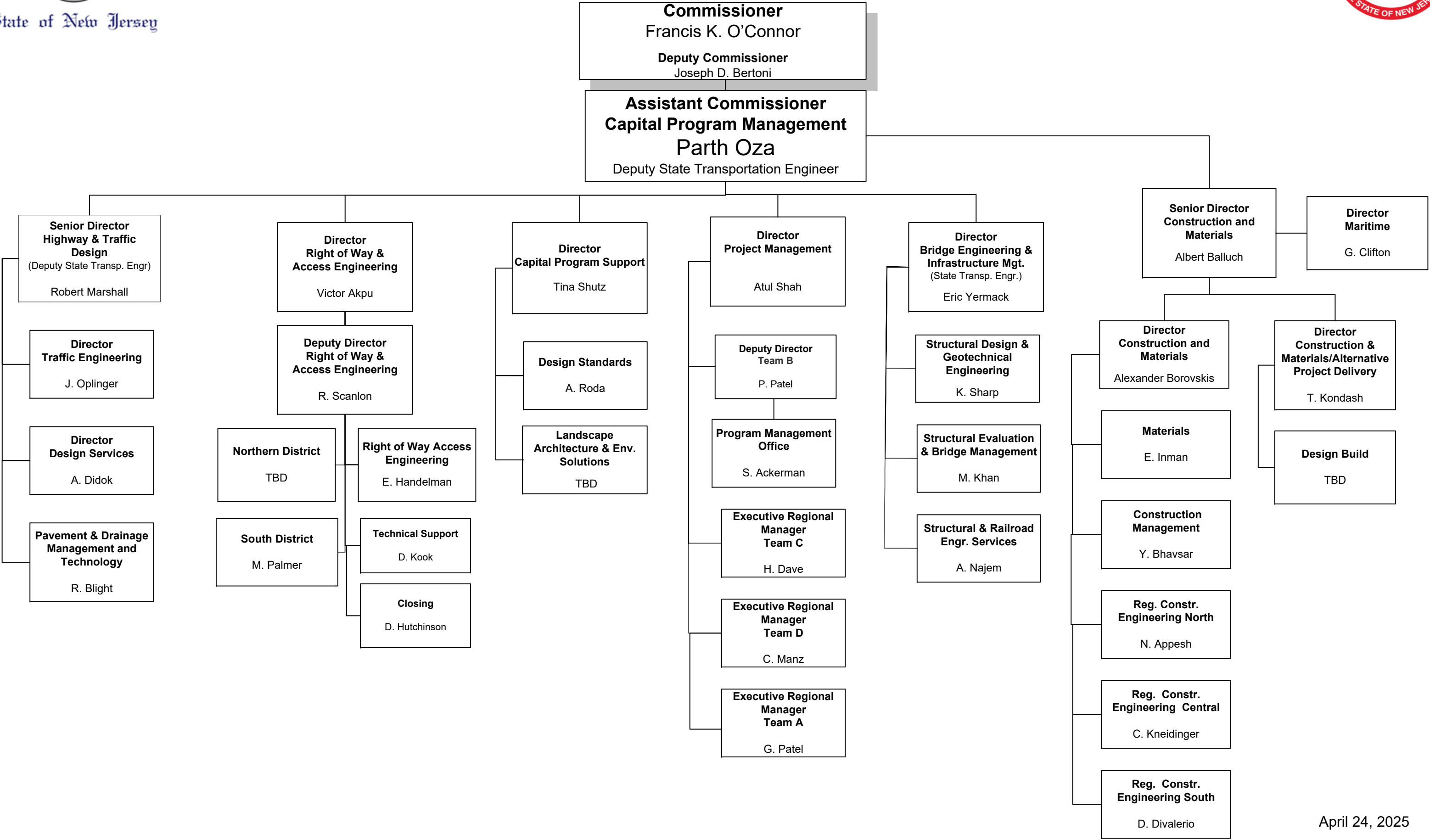




State of New Jersey



New Jersey Department of Transportation  
Organization Chart  
Capital Program Management

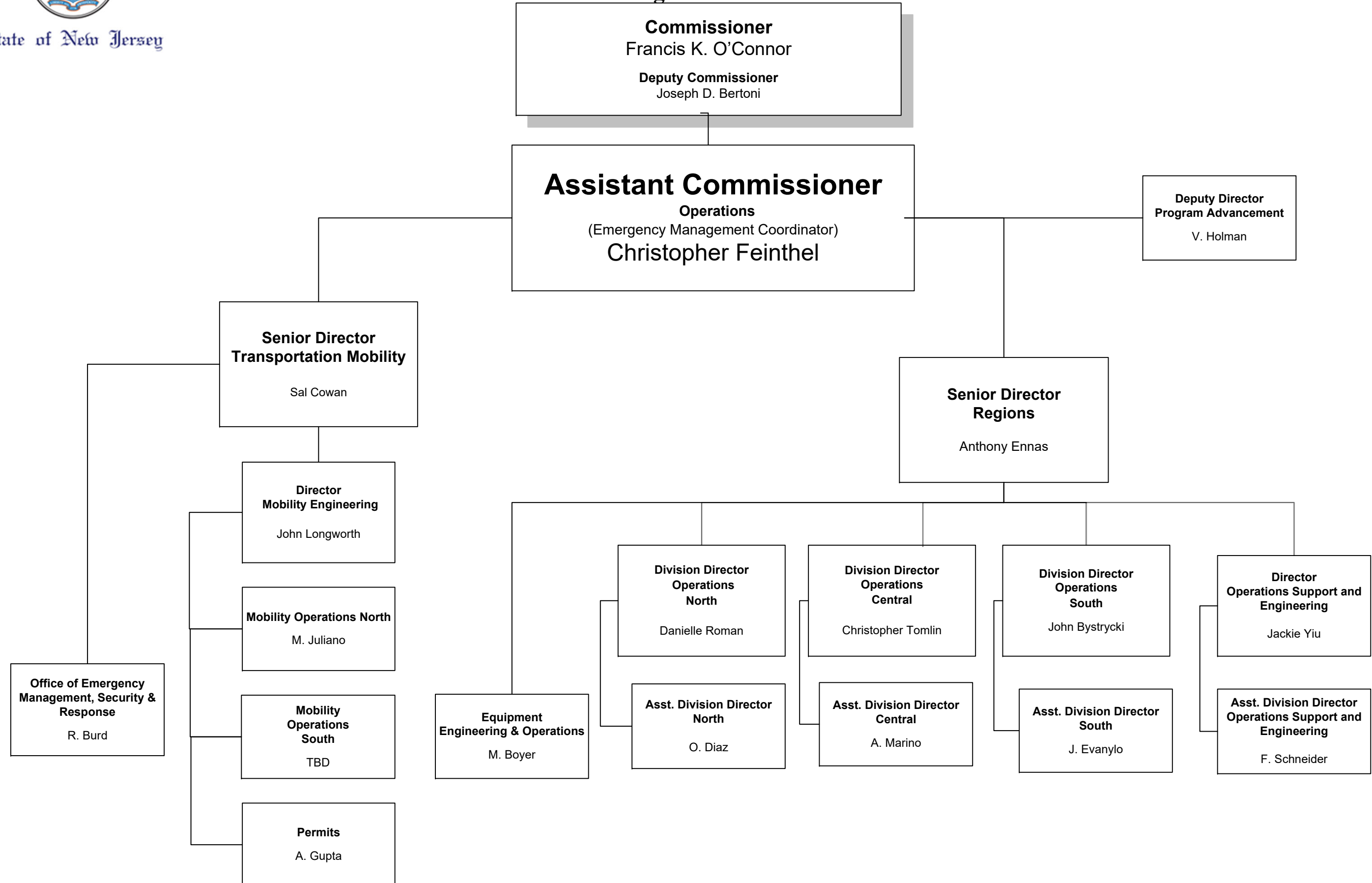




State of New Jersey



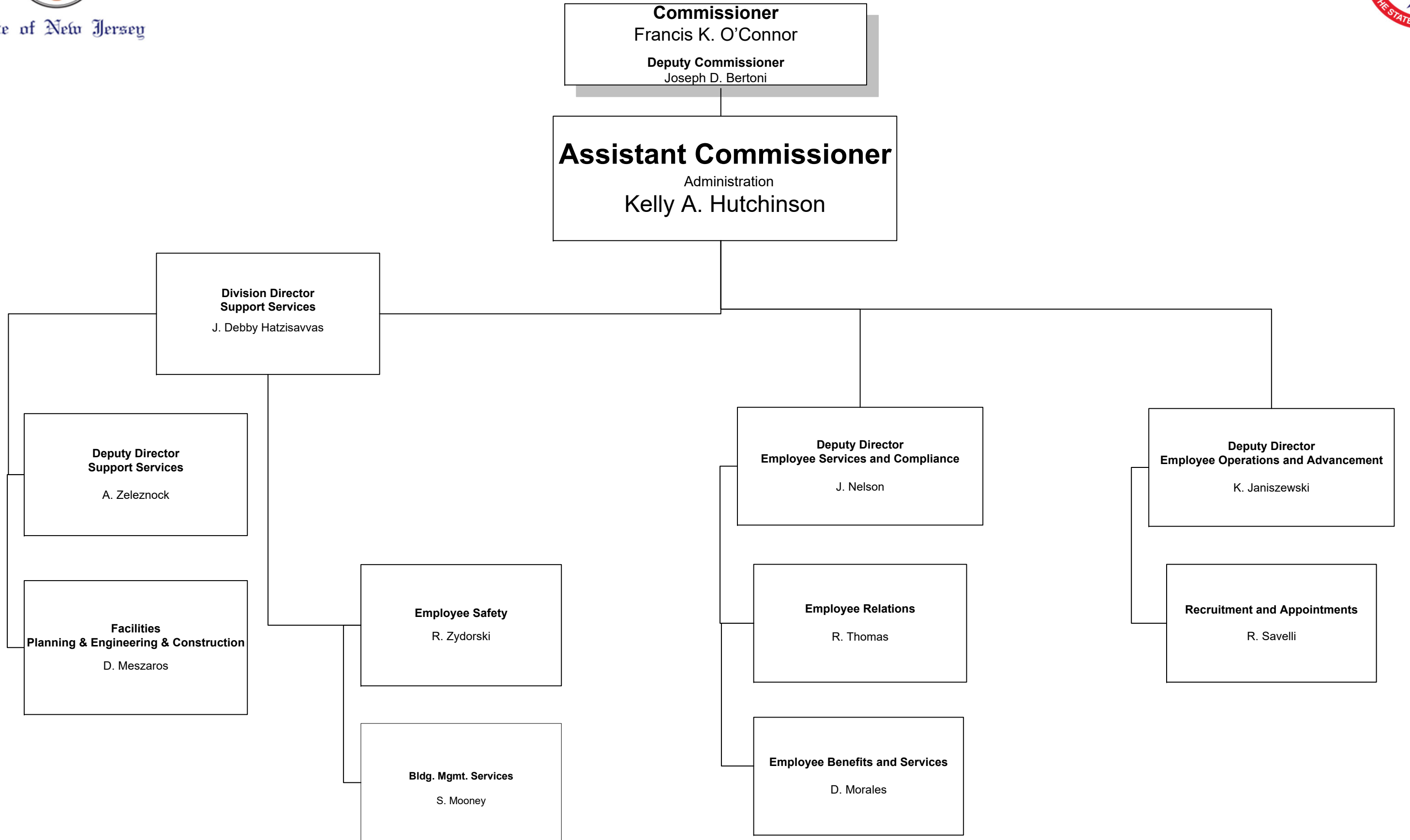
# New Jersey Department of Transportation Organization Chart





Organization Chart

Administration







State of New Jersey

New Jersey Department of Transportation  
Organization Chart  
Chief of Staff

